

# ***Welcome to use our product***

## **Installation Guide**

Step 1: Insert CD Driver of this product to the CD-ROM

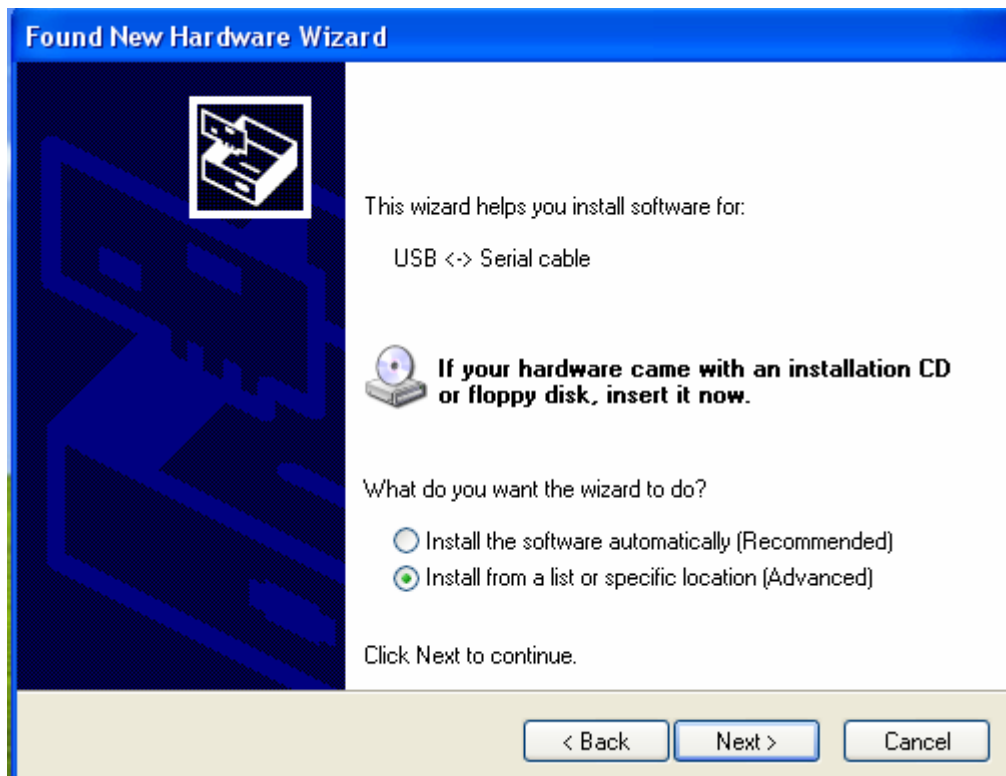
Step 2: Connect the device to a spare USB port on your PC , and find new hardware wizard, please refer to the following chart:



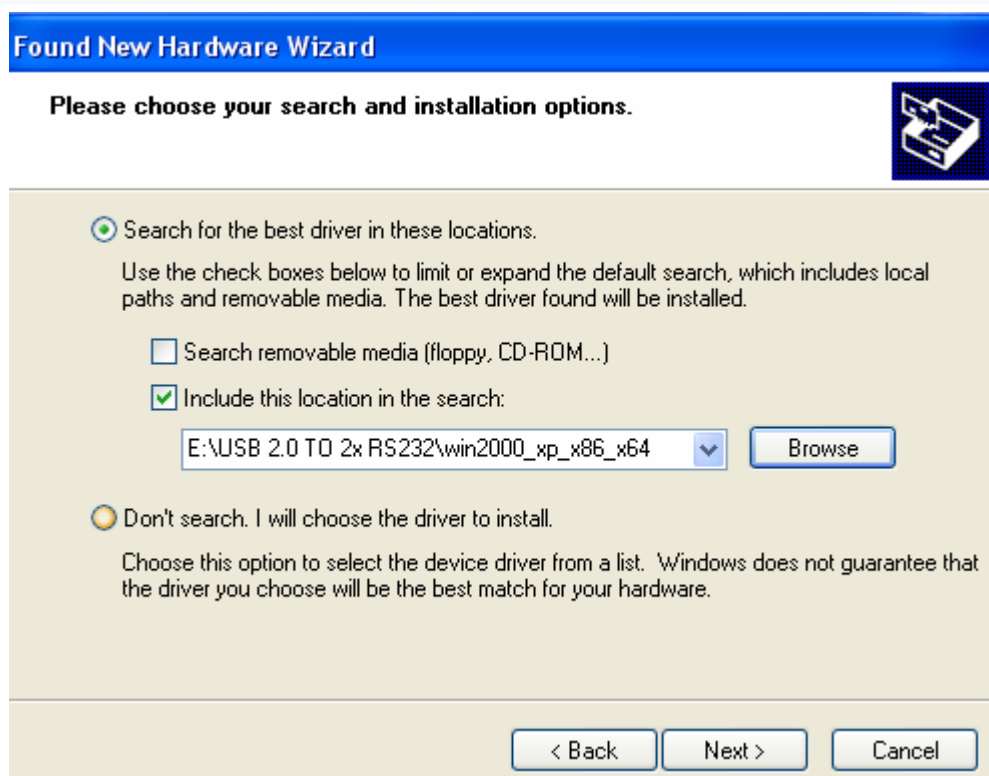
Step 3: Select “No,not this time”,click “Next” to continue.



Step 4: Select “Install from a list or specific location(Advanced)”,click “Next” to continue.



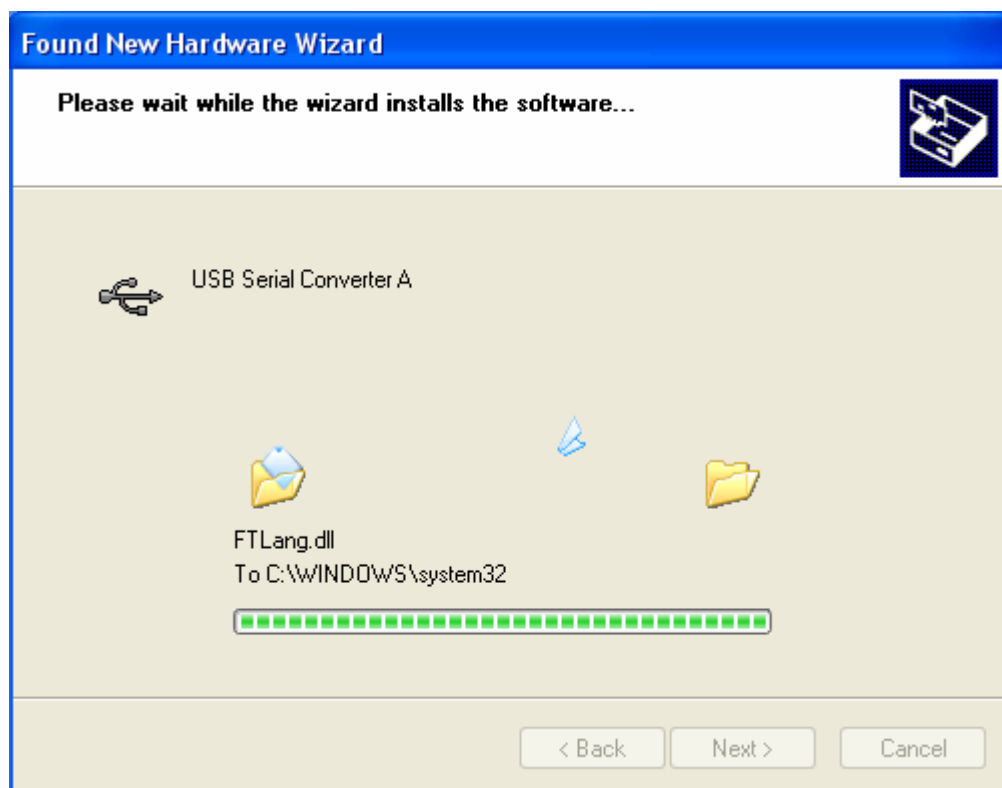
Step 5:. Select “Include this location in the search”, click “Browse” and choose the corresponding OS driver in CD. Click “Next” to continue



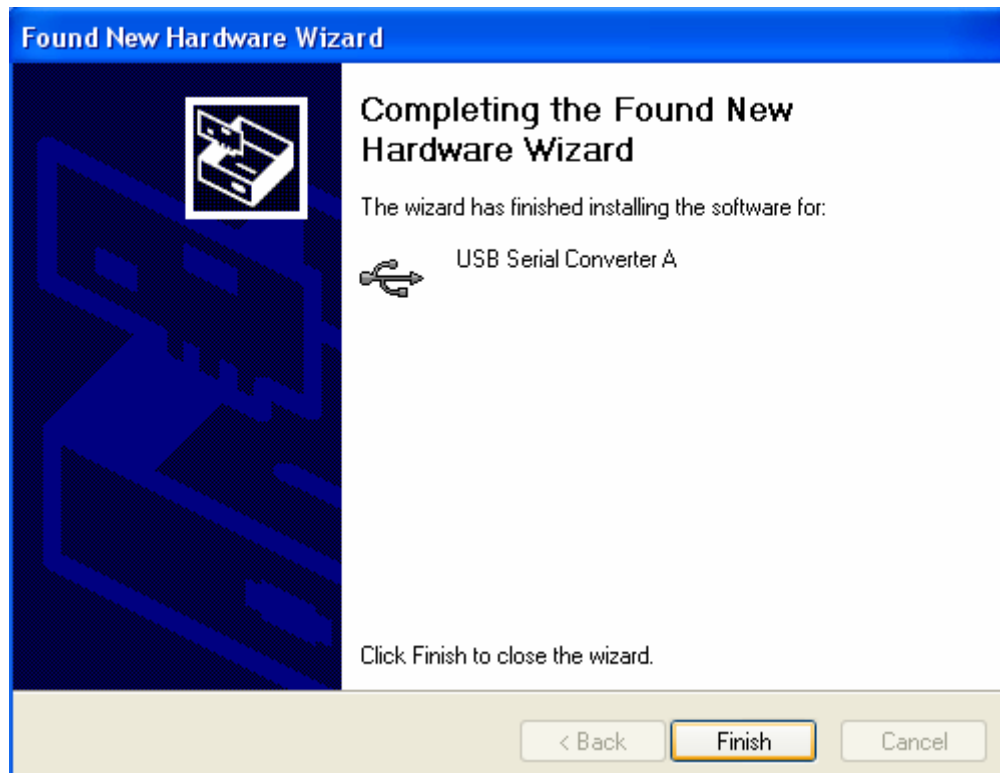
Step 6: Auto search for the corresponding driver in the CD.



Step 7: The wizard has started installation and copy file to your system



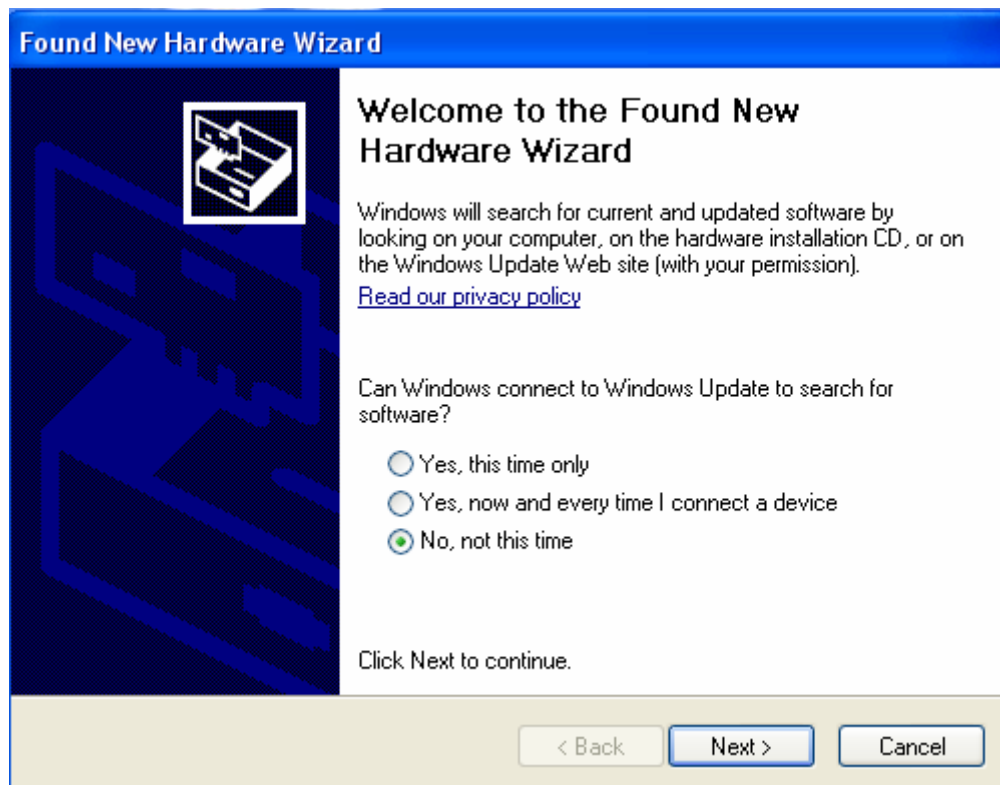
Step8: Click “Finish” to close the wizard.



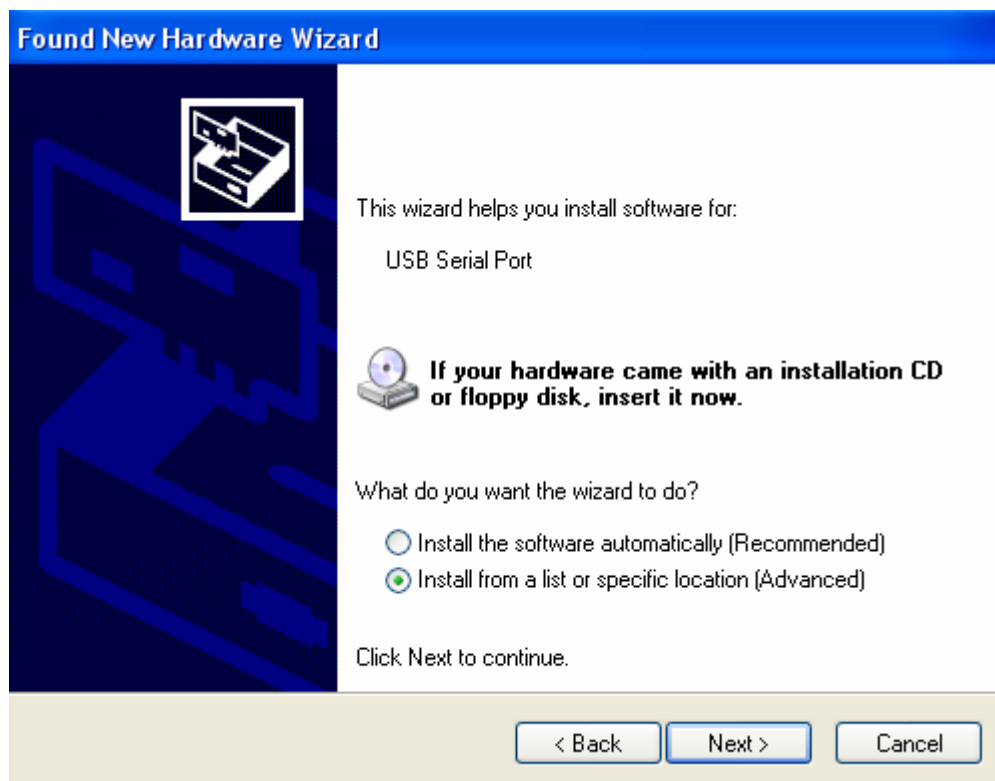
Step 9: Find new com port.



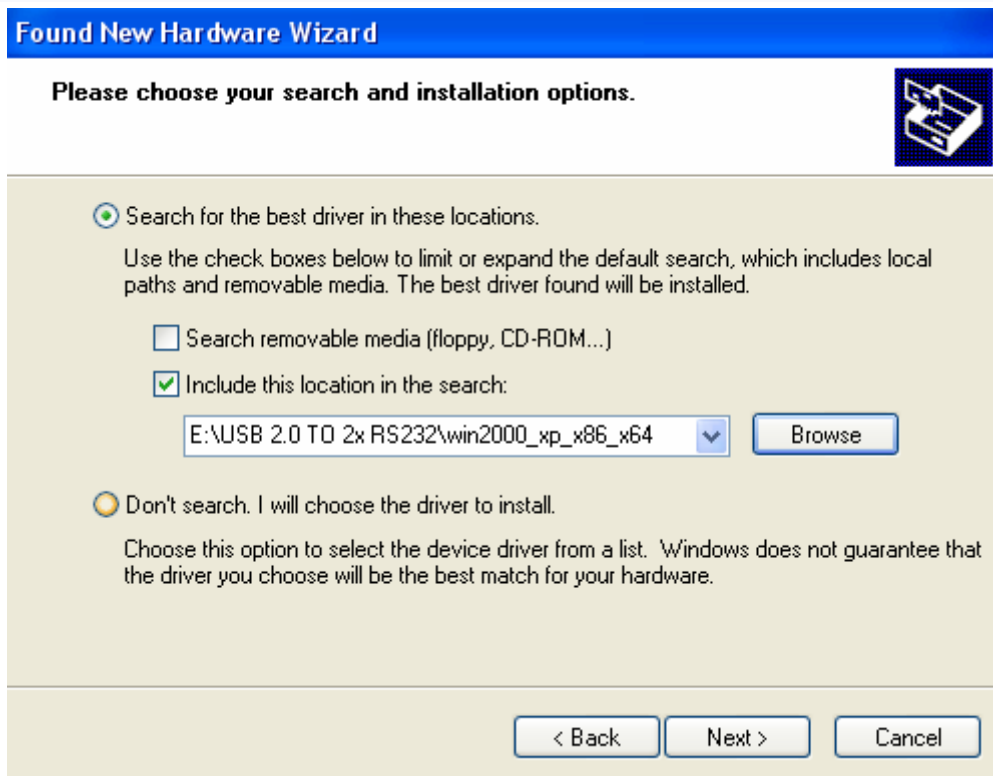
Step 10: Select “No,not this time”,click “Next” to continue.



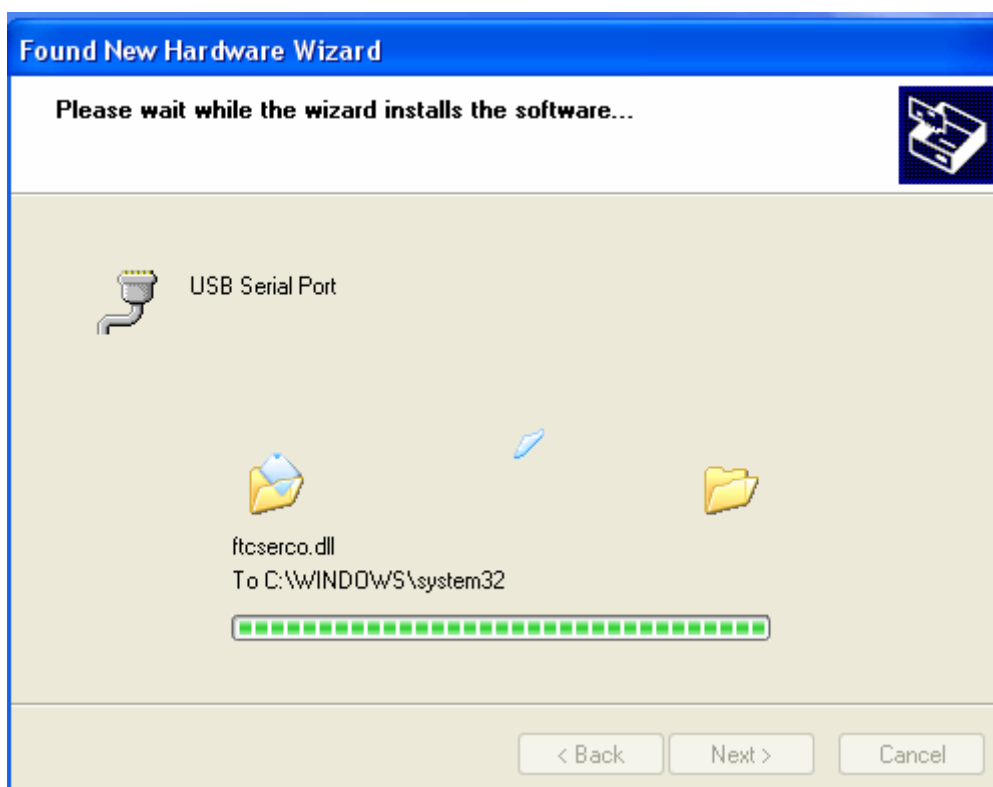
Step 11: Select “Install from a list or specific location(Advanced),click “Next” to continue.



Step12: Select “Include this location in the search”, click “Browse” and choose the corresponding OS driver in CD. Click “Next” to continue



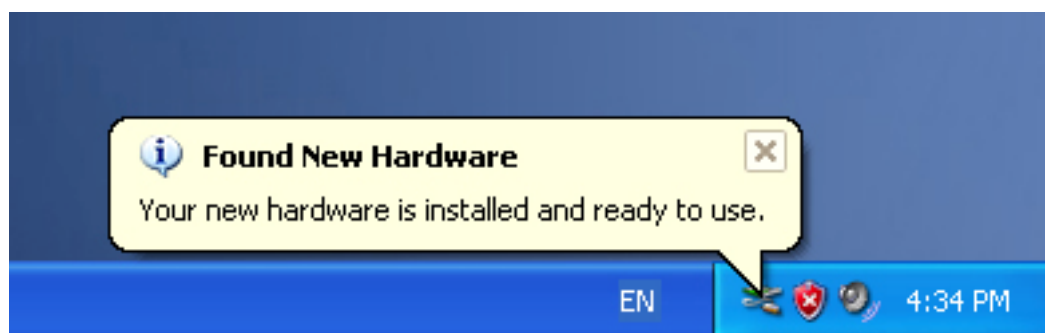
Step 13: The wizard has started insllation and copy file to your system .



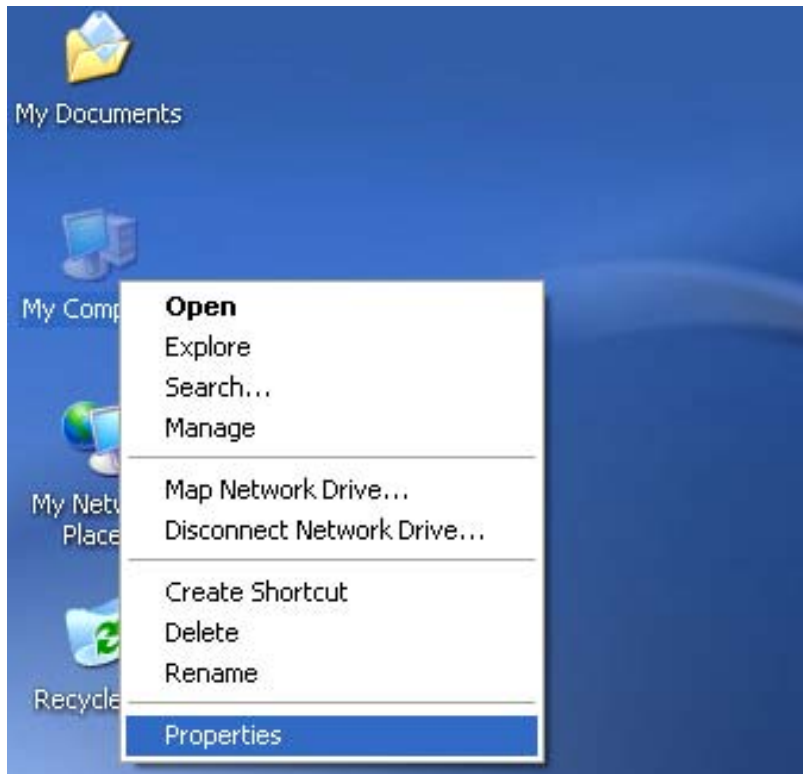
Step 14: Installation completed , click “Finish” to close the wizard.



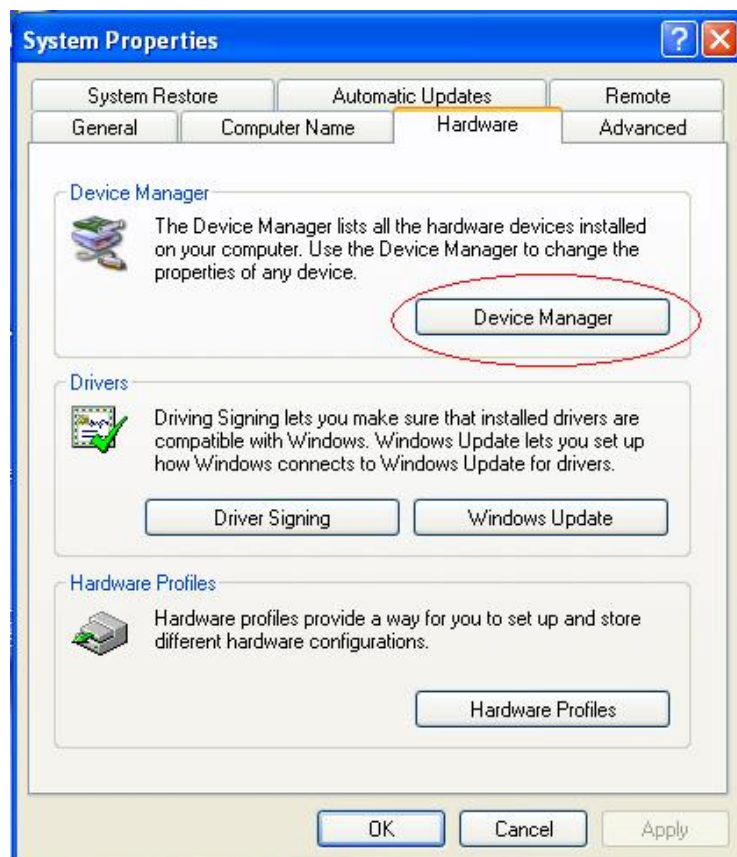
Step 15: Your new hardware is installed and ready to use.



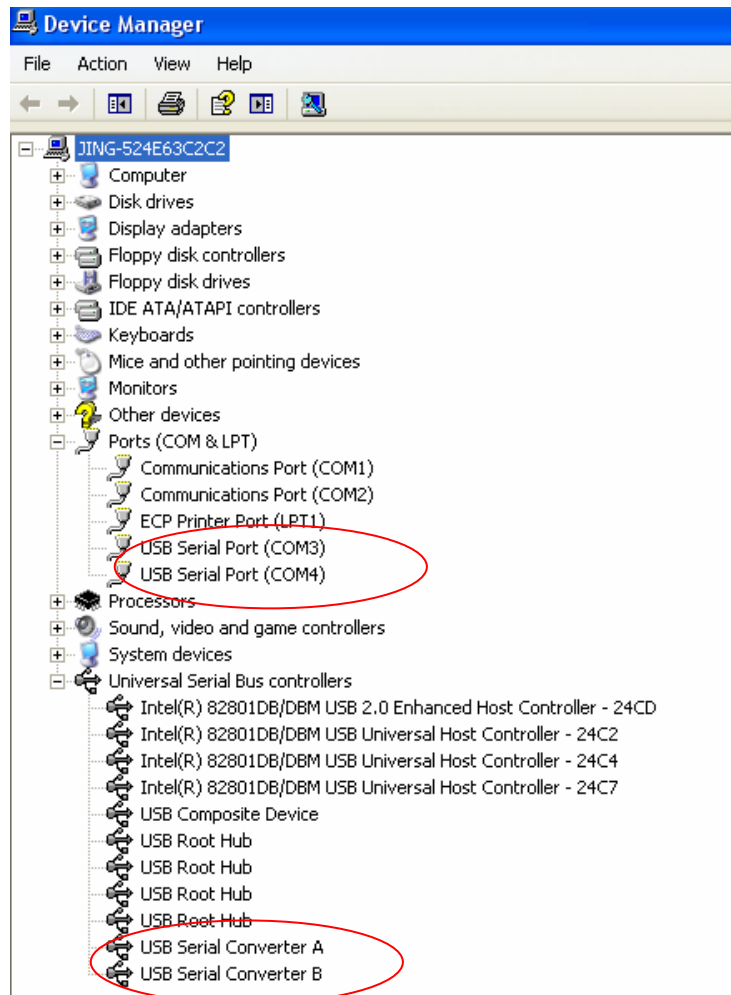
Step 16: If you want to see it, right click “ my computer” , then click “Properties”.



Step 17: Select “Device Manager” in the “Hardware” of the interface “System Properties”, click it, you can see the hardware devices installed on your computer , please refer to the following chart :



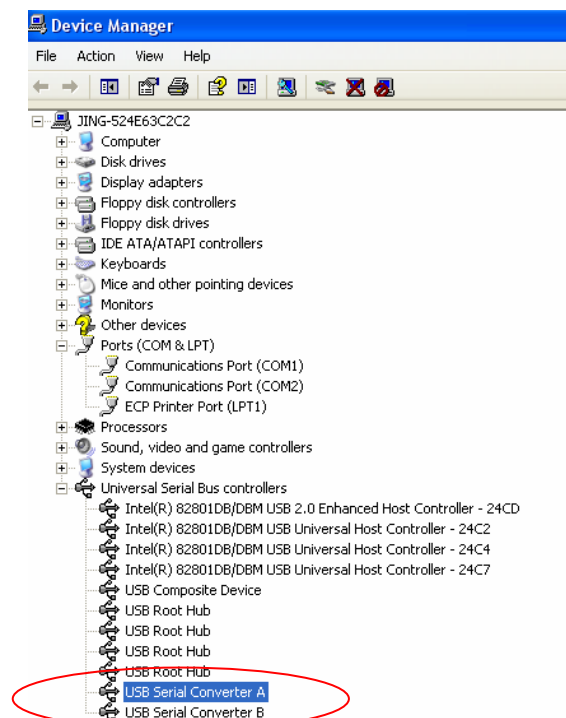




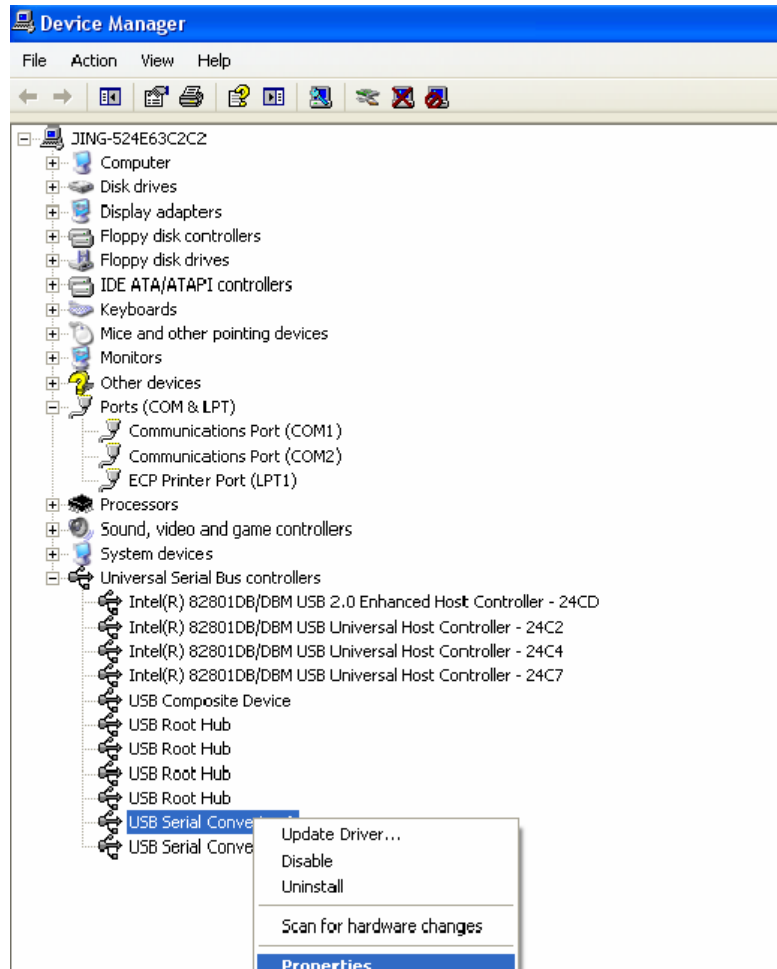
Step 18: Installation finished .

## Remarks:

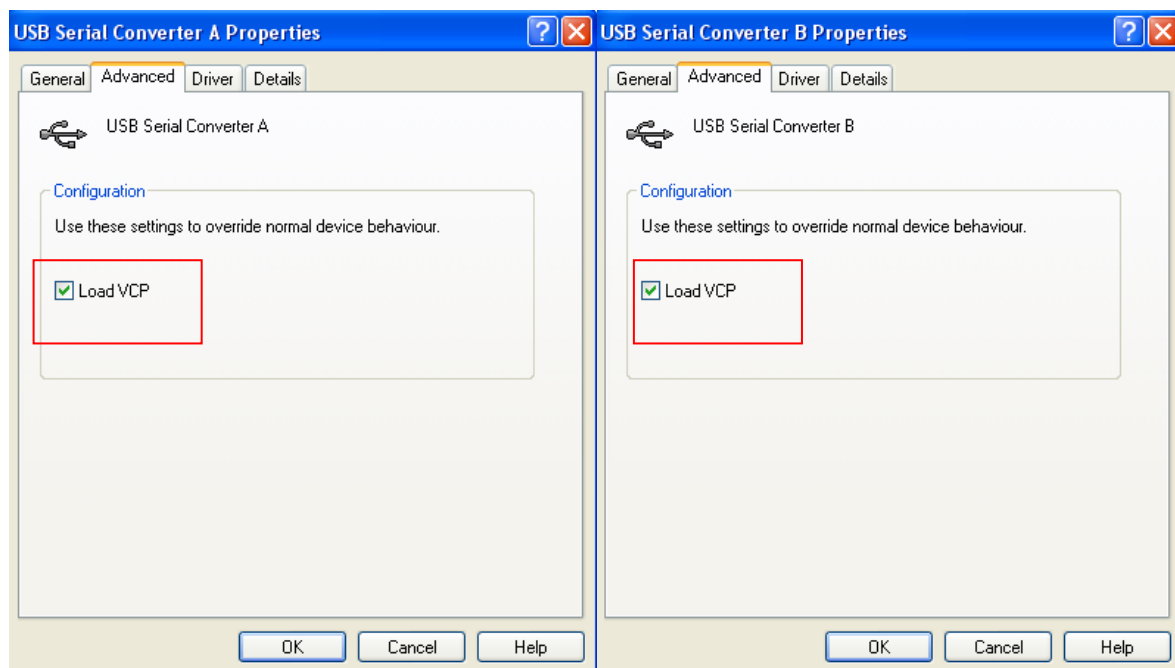
After installation , if you can see “USB Serial Converter” from the “Device Manager” ,but can’t see “USB Serial Port (COM3/COM4)” , please continue next steps.



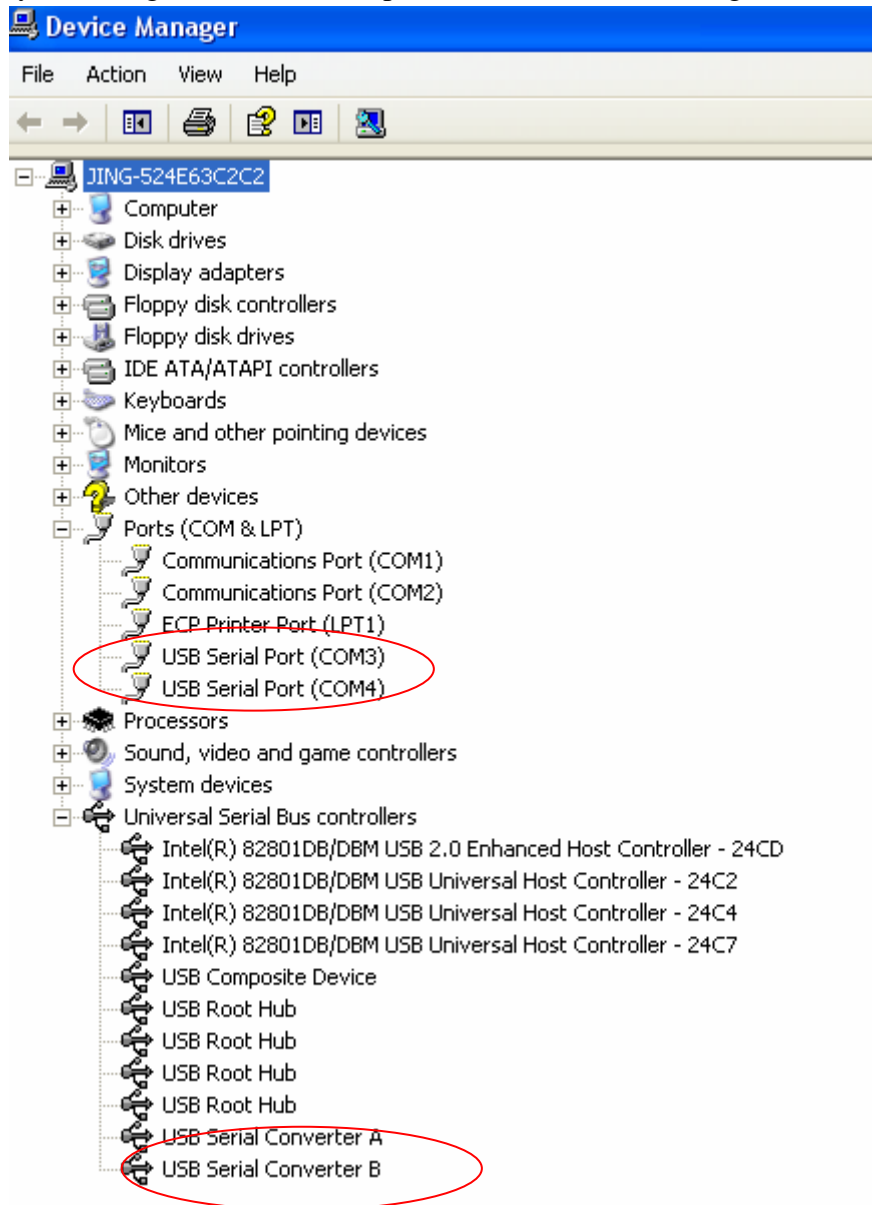
Step A: Right click “USB Serial Converter A/ USB Serial Converter B”, then click “Properties”.



Step B: Select “Load VCP” in the “Advanced”, click “OK”.



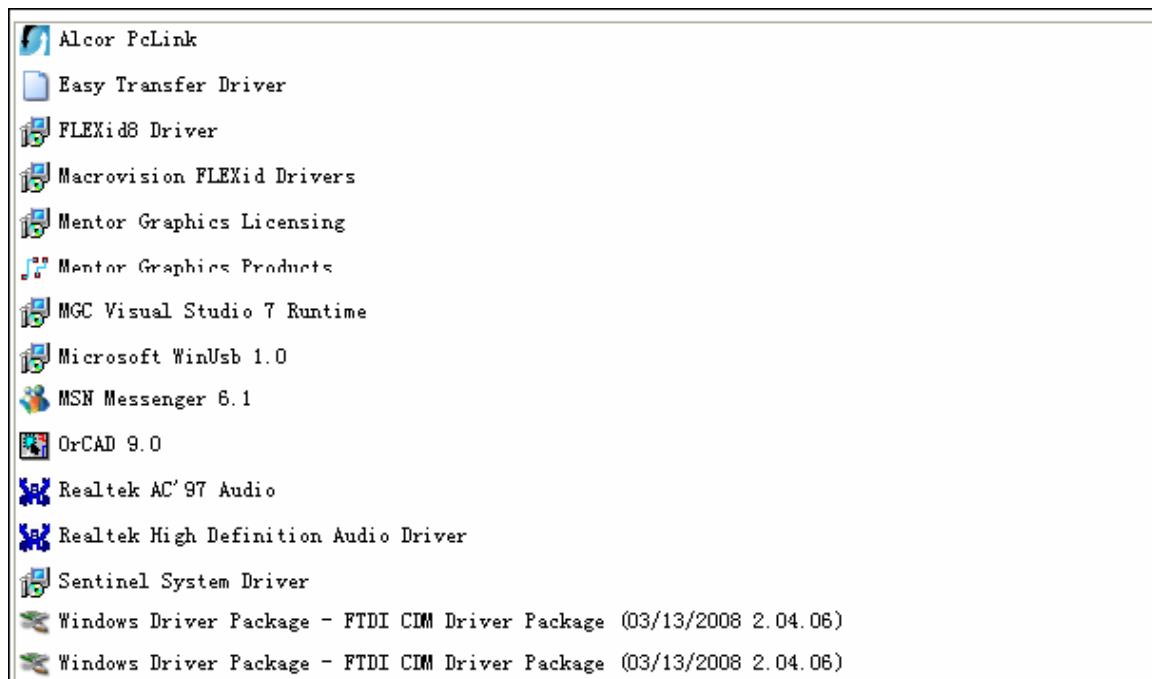
Step C: Move out USB 2.0 TO 2\* RS232 on your computer. Connect the device to an old USB port on your PC again, now it's ok , please refer to the following chart:



Congratulations, installation is successful.

## Remove Driver

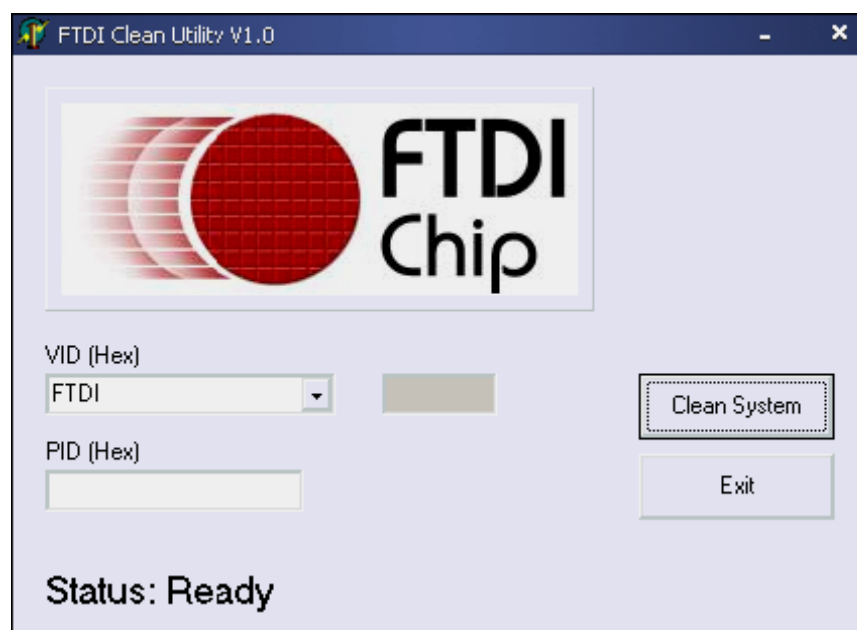
- 1, Go to the "Add or Remove program" from "Control pane" to find the "Windows Driver Package--- FTDI CDM Driver Package (03/13/2008 2.04.06)"  
Windows Driver Package--- FTDI CDM Driver Package (03/13/2008 2.04.06)"



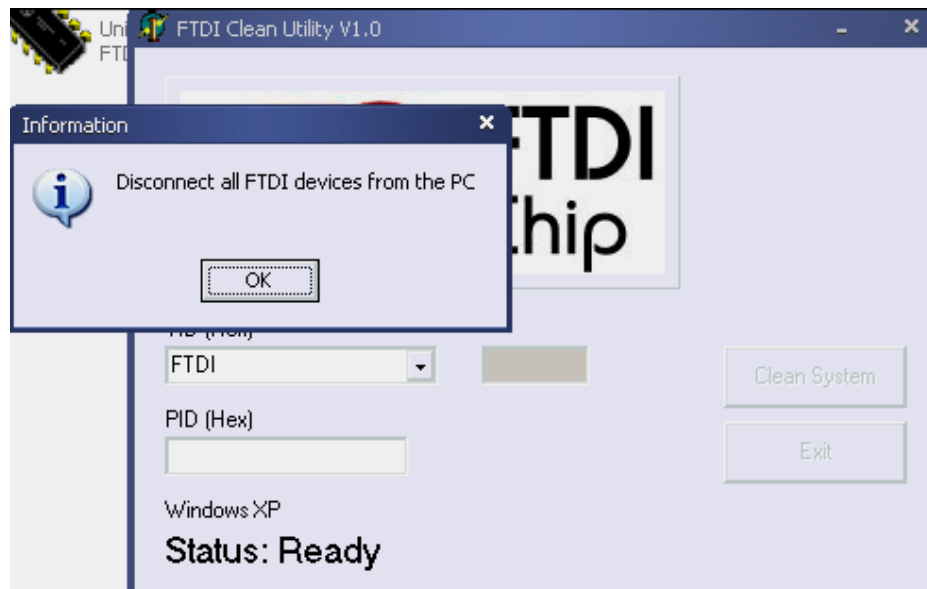
- 2, Just select it and click "Remove" to remove the driver program .
- 3, Open the drivers of this product , please refer to the below chart :



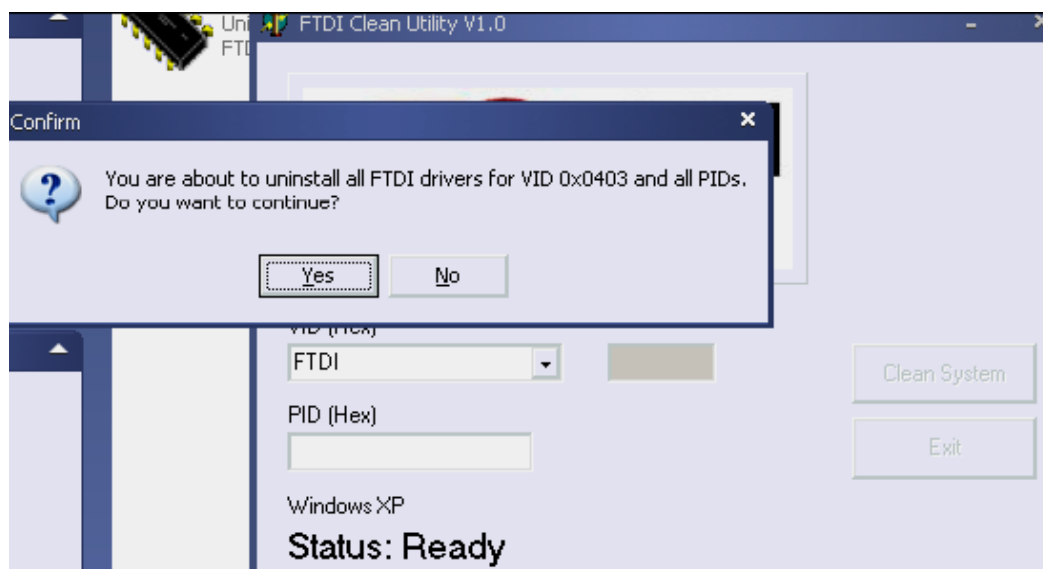
- 4 , Double click "FTClen.exe", it appears the following interface



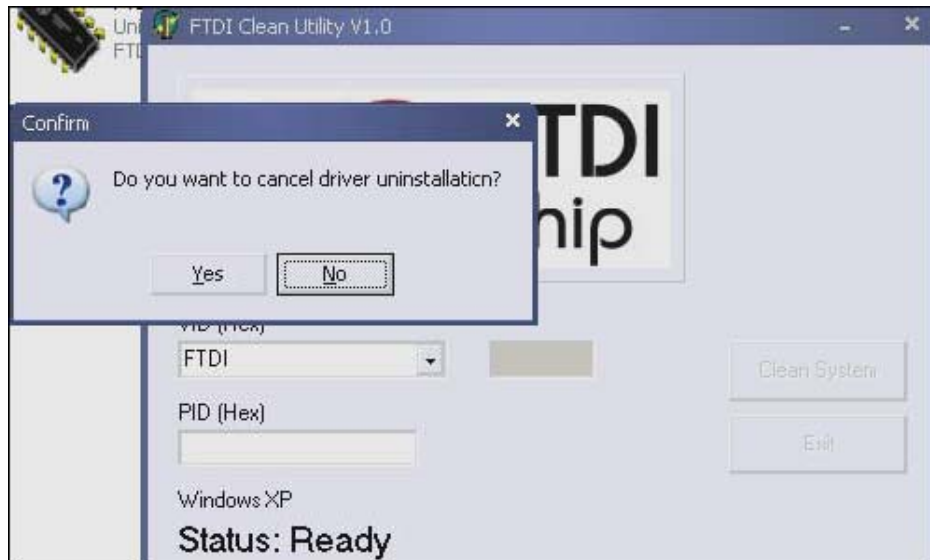
5 , click “Clean System”, it appears the following interface :



6 , Disconnect USB 2.0 To 2\* rs232 device from the pc , click “ok”it appears the following interface,then click “Yes”



7, please click “No” to uninstall driver



8, When Uninstall is completed, please click "Exit" to terminate the uninstall application.

